

SANITARY FITTINGS

food processing - portable water - marine applications
DIN 11851 / AISI 316L / EN 1.4404 ra 0.6 to 1.8 microns



roughness metrology
quality assurance



The Symbol of Assurance



SME sanitary couplings are standardized couplings commonly used in food processing, portable water and marine applications in acc. to DIN 11851, Tri-clover and industry regulations with tri-clamp joints, hose shanks, and welding ends.

American 3-A Sanitary Standards and European EHEDG guidelines are one of the most demanding norms in industry. SME has certified our processes in acc. to 3-A #3036 and certified to be using 3-A symbol and EHEDG marks on relevant fittings.

Finest surface in combination with stainless steel is desired to process all sanitary-graded fittings. Using the low-carbon contained better durable and corrosion-resistant stainless steel AISI 316L, or EN 1.4404 (X2CrNiMo17132), we also introduce a highest level of CNC lathes from Japanese industrial techniques. That gives us the stability to control over the roughness as inner surface Ra 0.8µm and outer Ra 1.6µm.



Laser markings SME SS316L 3-A TRICLOVER **** SERIAL are applied and can be done as requested on each fitting. Before that the sanitary couplings are taken out of the ultrasonic cleaning water tanks getting rid of work oil in process. And shrinking foam is used after lazering as the standard package to keep them dry and intact from dust or hand sweating by any chance.

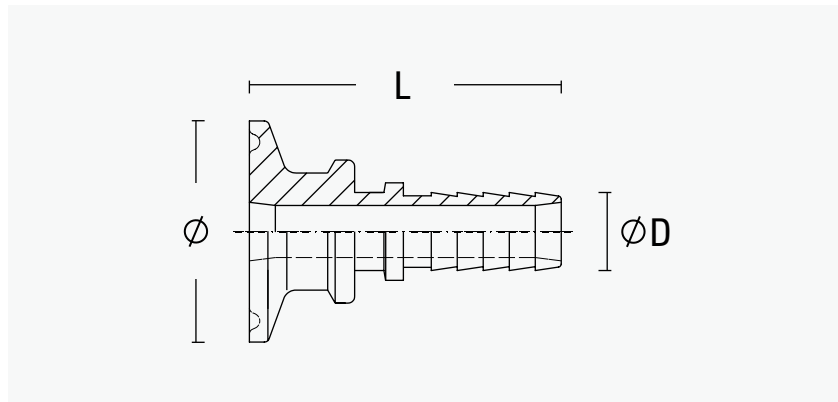
Type test with surface metrological instruments (roughness testers) is applied when we design and need to prove the capacity of work flows. Visual checks at final stages of fabrication with roughness calibers are made for further assurance.





316L Tri-clover fitting by hose tail and crimping collar

We work Ra 0.6 (internal) and 0.8 (external) on sanitary fittings made of 316L (1.4404), certified in category 63-03 per 3A regulations.



DN (MM)	(INCH)	Ø (MM)	Ø D (MM)	L (MM)	316L (1.4404)
10	3/8	25.2	10.0	48.0	204111.1
12	1/2	25.2	12.0	48.0	204112.1
16	5/8	25.2	16.0	48.0	204113.1
19	3/4	25.2	19.2	48.0	204114.1
10	3/8	50.5	10.0	48.8	204131
12	1/2	50.5	12.0	48.8	204132
16	5/8	50.5	16.0	48.8	204133.1
19	3/4	50.5	19.2	48.8	204134
19	3/4	50.5	19.5	57.0	204134.9
25	1	50.5	25.0	48.8	204135
25	1	50.5	25.5	57.0	204135.9
25	1	50.5	27.0	48.7	204136
32	1¼	50.5	32.2	64.0	204137.4
32	1¼	50.5	32.4	64.0	204137
40	1½	50.5	38.2	79.0	204138.9

DN (MM)	Ø (INCH)	Ø (MM)	Ø D (MM)	L (MM)	316L (1.4404)
40	1½	50.5	38.9	95.0	204138.21
40	1½	50.5	39.0	64.0	204138.1
40	1½	50.5	39.5	64.0	204138
40	1½	64.0	39.0	60.0	204144
50	2	64.0	50.8	90.0	204145.9
50	2	64.0	51.0	75.2	204145.1
50	2	64.0	52.0	75.2	204145
50	2	77.5	51.0	75.2	204153
65	2½	77.5	63.2	90.5	204154.4
65	2½	77.5	63.5	90.5	204154
65	2½	77.5	64.0	86.0	204155.1
65	2½	77.5	65.0	86.0	204155
75	3	91.0	75.4	89.0	204165.4
75	3	91.0	76.0	89.0	204165.1
75	3	91.0	76.5	114.0	204165.9
75	3	91.0	78.0	89.0	204165
100	4	119.0	100.8	128.5	204166
100	4	119.0	101.6	130	204166.1
100	4	119.0	102.5	133	204166.9
100	4	119.0	103.6	150	204166.21
150	6	167.0	150.1	200	204168.1



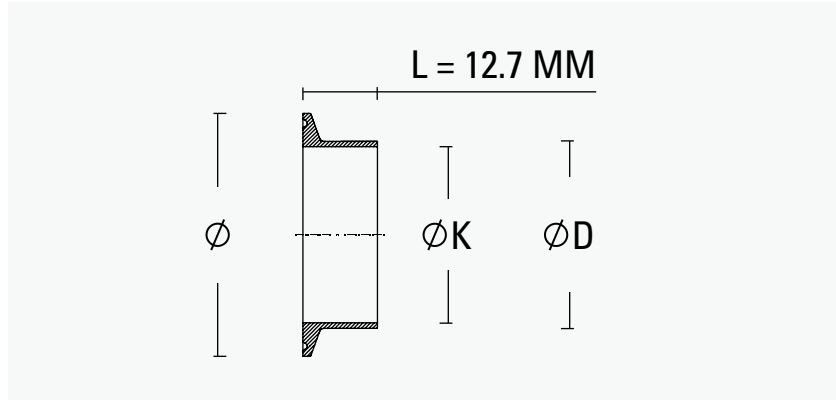
DN (MM)	Ø (INCH)	Ø (MM)	Ø D (MM)	L (MM)	316L (1.4404)
25	1	50.5	25.4	48.7	204035
32	1¼	50.5	32.4	64.0	204037
40	1½	50.5	38.4	64.0	204038
50	2	64.0	50.4	75.2	204045
65	2½	77.5	63.4	86	204055
75	3	91.0	75.4	89	204065
75	3	106.0	80.4	85	204076
100	4	119.0	100.3	130	204077
100	4	119.0	101.6	130	204077.1

316L Tri-clover BW fitting

L=12.7 MM

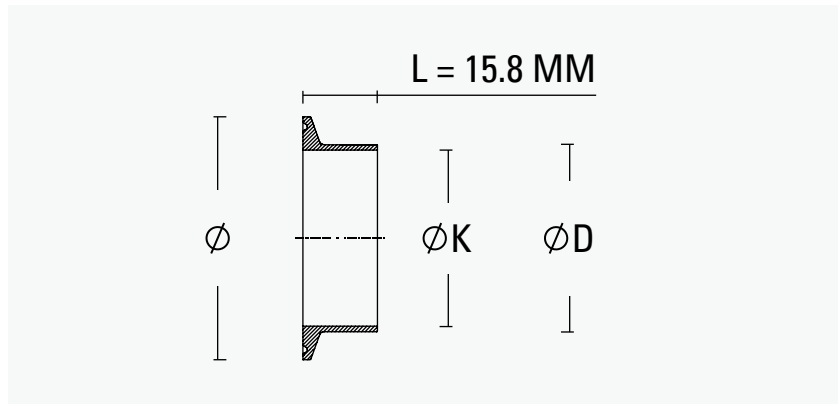


We work Ra 0.6 (internal) and 0.8 (external) on sanitary fittings made of 316L (1.4404), certified in category 63-03 per 3A regulations.



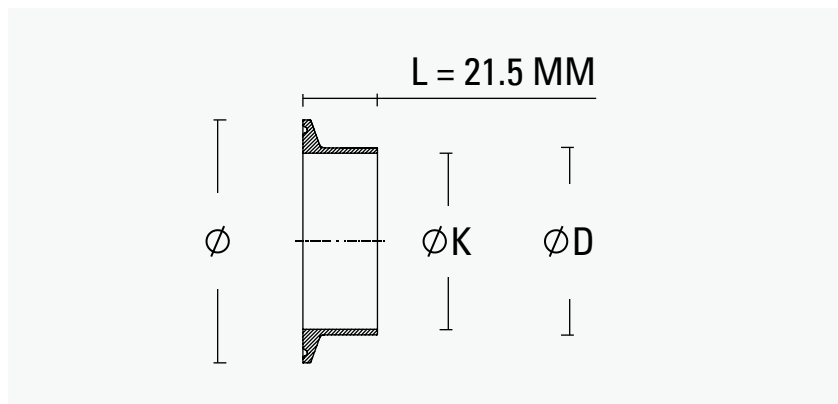
DN (MM)	(INCH)	Ø (MM)	Ø D (MM)	Ø K (MM)	L (MM)	316L (1.4404)
15	1/2	25.2	12.7	9.4	12.7	210309.11
20	3/4	25.2	19.05	15.75	12.7	210309.12
10	3/8	34.0	10.2	7.0	12.7	210310.1
15	1/2	34.0	13.0	10.0	12.7	210310.11
15	1/2	34.0	13.5	10.3	12.7	210310.12
20	3/4	34.0	17.2	14.0	12.7	210310.13
20	3/4	34.0	19.0	16.0	12.7	210310.14
20	3/4	34.0	21.3	18.1	12.7	210310.15
20	3/4	34.0	23.0	20.0	12.7	210310.16
25	1	50.5	25.4	22.2	12.7	210313.1
25	1	50.5	26.9	23.7	12.7	210313.11
32	1¼	50.5	29.0	26.0	12.7	210313.12
32	1¼	50.5	32.0	29.5	12.7	210313.13
32	1¼	50.5	33.7	29.7	12.7	210313.14
32	1¼	50.5	35.0	32.0	12.7	210313.15
40	1½	50.5	38.0	35.5	12.7	210313.16
40	1½	50.5	38.1	34.8	12.7	210313.17
40	1½	50.5	41.0	38.0	12.7	210313.18
40	1½	50.5	42.4	38.4	12.7	210313.19
50	2	64.0	51.0	48.5	12.7	210316.13
50	2	64.0	52.0	49.0	12.7	210316.14
50	2	64.0	53.0	50.0	12.7	210316.15
65	2½	77.5	60.3	56.3	12.7	210317.11
65	2½	77.5	63.5	60.2	12.7	210317.12
65	2½	77.5	63.5	60.3	12.7	210317.13
75	3	91.0	70.0	66.0	12.7	210318.1
75	3	91.0	76.1	72.9	12.7	210318.11
75	3	91.0	76.1	71.5	12.7	210318.12
75	3	91.0	76.2	72.9	12.7	210318.13
90	3½	106.0	85.0	81.0	12.7	210319.11
90	3½	106.0	88.9	84.3	12.7	210319.12

**316L Tri-clover BW fitting
L=15.8 MM**



DN (MM)	(INCH)	Ø (MM)	Ø D (MM)	Ø K (MM)	L (MM)	316L (1.4404)
100	4	119	101.6	97.38	15.8	210320.11
100	4	119	101.6	97.6	15.8	210320.12
100	4	119	104	100	15.8	210320.13
100	4½	130	114.3	109.1	15.8	210321.11
125	5	155	129	125	15.8	210322.11
125	5½	155	139.7	134.5	15.8	210322.12
150	6	183	154	150	15.8	210324.11
200	8	233.5	204	200	15.8	210326.11

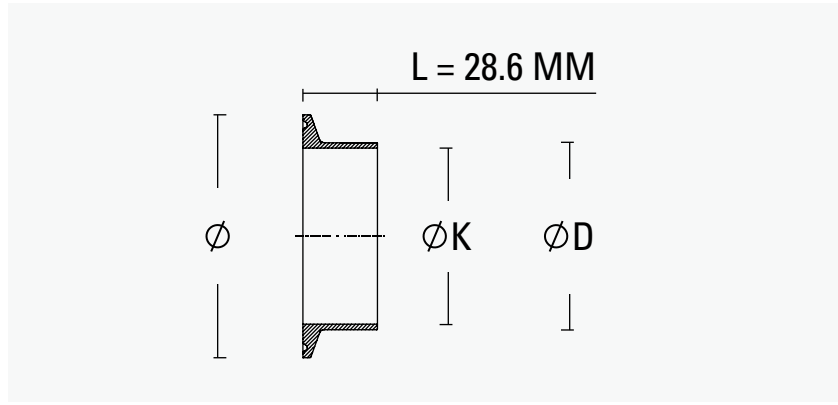
**316L Tri-clover BW fitting
L=21.5 MM**



DN (MM)	(INCH)	Ø (MM)	Ø D (MM)	Ø K (MM)	L (MM)	316L (1.4404)
15	1/2	25.2	12.7	9.4	21.5	210309.21
20	3/4	25.2	19.0	15.75	21.5	210309.22
10	3/8	34.0	10.2	7.0	21.5	210310.2
15	1/2	34.0	13.0	10.0	21.5	210310.21
15	1/2	34.0	13.5	10.3	21.5	210310.22
20	3/4	34.0	17.2	14.0	21.5	210310.23
20	3/4	34.0	19.0	16.0	21.5	210310.24
20	3/4	34.0	21.3	18.1	21.5	210310.25
25	1	50.5	25.4	22.2	21.5	210313.2
25	1	50.5	26.9	23.7	21.5	210313.21

DN (MM)	(INCH)	Ø (MM)	Ø D (MM)	Ø K (MM)	L (MM)	316L (1.4404)
32	1¼	50.5	29.0	26.0	21.5	210313.22
32	1¼	50.5	32.0	29.5	21.5	210313.23
32	1¼	50.5	33.7	29.7	21.5	210313.24
32	1¼	50.5	35.0	32.0	21.5	210313.25
40	1½	50.5	38.0	35.5	21.5	210313.26
40	1½	50.5	38.1	34.8	21.5	210313.27
40	1½	50.5	41.0	38.0	21.5	210313.28
40	1½	50.5	42.4	38.4	21.5	210313.29
50	2	64.0	48.3	44.3	21.5	210316.21
50	2	64.0	50.8	47.5	21.5	210316.22
50	2	64.0	51.0	48.5	21.5	210316.23
50	2	64.0	52.0	49.0	21.5	210316.24
50	2	64.0	53.0	50.0	21.5	210316.25
65	2½	77.5	60.3	56.3	21.5	210317.21
65	2½	77.5	63.5	60.2	21.5	210317.22
65	2½	77.5	63.5	60.3	21.5	210317.23
75	3	91.0	70.0	66.0	21.5	210318.2
75	3	91.0	76.1	72.9	21.5	210318.21
75	3	91.0	76.1	71.5	21.5	210318.22
75	3	91.0	76.2	72.9	21.5	210318.23
90	3½	106.0	85.0	81.0	21.5	210319.21
90	3½	106.0	88.9	84.3	21.5	210319.22
100	4	119.0	101.6	97.38	21.5	210320.21
100	4	119.0	101.6	97.6	21.5	210320.22
100	4	119.0	104.0	100.0	21.5	210320.23
100	4½	130.0	114.3	109.1	21.5	210321.21
125	5	155.0	129.0	125.0	21.5	210322.21
125	5½	155.0	139.7	134.5	21.5	210322.22
150	6	166.8	152.4	146.86	21.5	210323.21
150	6	183.0	154.0	150.0	21.5	210324.21
150	6½	183.0	168.3	163.1	21.5	210324.22
200	8	217.7	203.2	197.66	21.5	210325.21
200	8	233.5	204.0	200.0	21.5	210326.21
200	8½	233.5	219.1	213.9	21.5	210326.22
250	10	268.5	254.0	247.2	21.5	210327.21
300	12	319.3	304.8	298.0	21.5	210328.21

316L Tri-clover BW fitting
L=28.6 MM

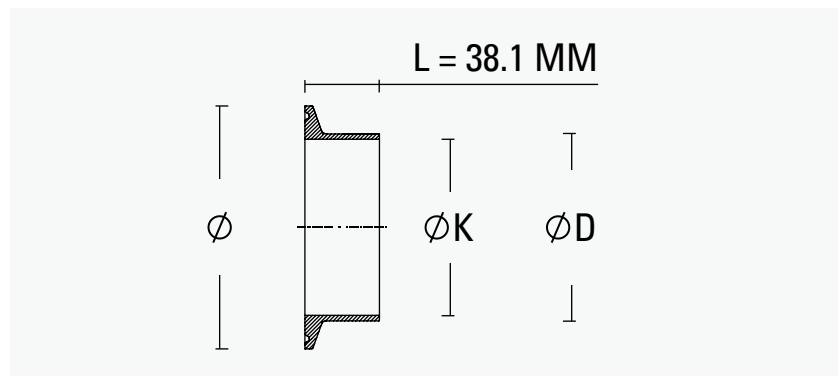


DN (MM)	(INCH)	Ø (MM)	Ø D (MM)	Ø K (MM)	L (MM)	316L (1.4404)
15	1/2	25.2	12.7	9.4	28.6	210309.31
20	3/4	25.2	19.05	15.75	28.6	210309.32
10	3/8	34.0	10.2	7.0	28.6	210310.3
15	1/2	34.0	13.0	10.0	28.6	210310.31
15	1/2	34.0	13.5	10.3	28.6	210310.32
20	3/4	34.0	17.2	14.0	28.6	210310.33
20	3/4	34.0	19.0	16.0	28.6	210310.34
20	3/4	34.0	21.3	18.1	28.6	210310.35
20	3/4	34.0	23.0	20.0	28.6	210310.36
25	1	50.5	25.4	22.2	28.6	210313.3
25	1	50.5	26.9	23.7	28.6	210313.31
32	1¼	50.5	29.0	26.0	28.6	210313.32
32	1¼	50.5	32.0	29.5	28.6	210313.33
32	1¼	50.5	33.7	29.7	28.6	210313.34
32	1¼	50.5	35.0	32.0	28.6	210313.35
40	1½	50.5	38.0	35.5	28.6	210313.36
40	1½	50.5	38.1	34.8	28.6	210313.37
40	1½	50.5	41.0	38.0	28.6	210313.38
40	1½	50.5	42.4	38.4	28.6	210313.39
50	2	64.0	48.3	44.3	28.6	210316.31
50	2	64.0	50.8	47.5	28.6	210316.32
50	2	64.0	51.0	48.5	28.6	210316.33
50	2	64.0	52.0	49.0	28.6	210316.34
50	2	64.0	53.0	50.0	28.6	210316.35
65	2½	77.5	60.3	56.3	28.6	210317.31
65	2½	77.5	63.5	60.2	28.6	210317.32
65	2½	77.5	63.5	60.3	28.6	210317.33
75	3	91.0	70.0	66.0	28.6	210318.3
75	3	91.0	76.1	72.9	28.6	210318.31
75	3	91.0	76.1	71.5	28.6	210318.32
75	3	91.0	76.2	72.9	28.6	210318.33



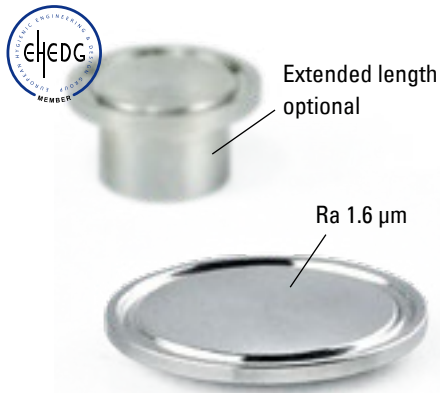
DN (MM)	(INCH)	Ø (MM)	Ø D (MM)	Ø K (MM)	L (MM)	316L (1.4404)
90	3½	106.0	85.0	81.0	28.6	210319.31
90	3½	106.0	88.9	84.3	28.6	210319.32
100	4	119.0	101.6	97.38	28.6	210320.31
100	4	119.0	101.6	97.6	28.6	210320.32
100	4	119.0	104.0	100.0	28.6	210320.33
100	4½	130.0	114.3	109.1	28.6	210321.31
125	5	155.0	129.0	125.0	28.6	210322.31
125	5½	155.0	139.7	134.5	28.6	210322.32
150	6	166.8	152.4	146.86	28.6	210323.31
150	6	183.0	154.0	150.0	28.6	210324.31
150	6½	183.0	168.3	163.1	28.6	210324.32
200	8	217.7	203.2	197.66	28.6	210325.31
200	8	233.5	204.0	200.0	28.6	210326.31
200	8½	233.5	219.1	213.9	28.6	210326.32
250	10	268.5	254.0	247.2	28.6	210327.31
300	12	319.3	304.8	298.0	28.6	210328.31

316L Tri-clover BW fitting
L=38.1 MM

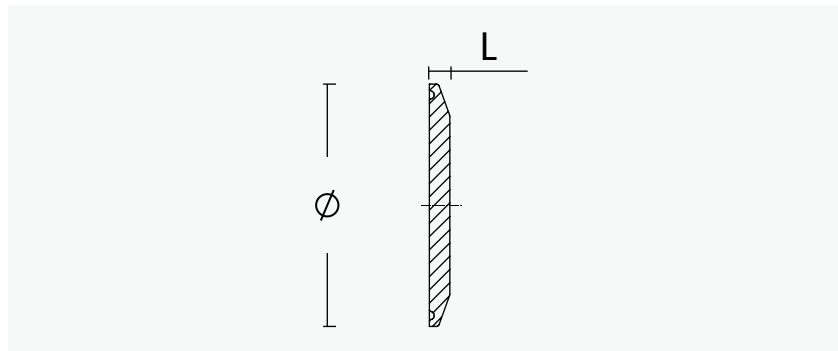


DN (MM)	(INCH)	Ø (MM)	Ø D (MM)	Ø K (MM)	L (MM)	316L (1.4404)
150	6	166.8	152.4	146.86	38.1	210323.41
200	8	217.7	203.2	197.66	38.1	210325.41
250	10	268.5	254.0	247.2	38.1	210327.41
300	12	319.3	304.8	298.0	38.1	210328.41

316L & 304 Tri-clover blind end

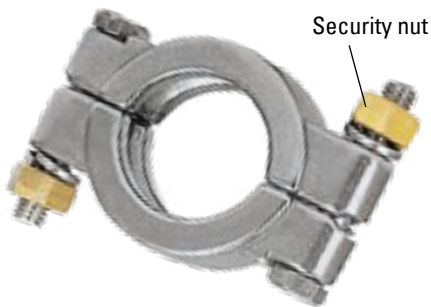


We offer blind ends of Tri-Clover with optional length of extended piping.

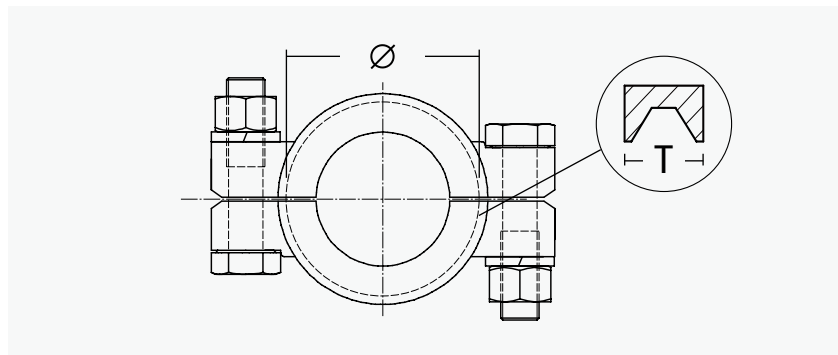


DN (MM)	Ø (INCH)	Ø (MM)	L (MM)	316L (1.4404)	304 (1.4301)
15	1/2	25.2	6.4	210341	210341.1
25	1	34.0	-	210342	210342.1
40	1½	50.5	6.5	210344	210344.1
50	2	64.0	6.5	210345	210345.1
65	2½	77.5	6.5	210346	210346.1
80	3	91.0	6.5	210347	210347.1
100	4	119.0	8.1	210348	210348.1
150	6	167.0	-	210349	210349.1

304 Tri-clamp heavy duty with security nut, 13MHP



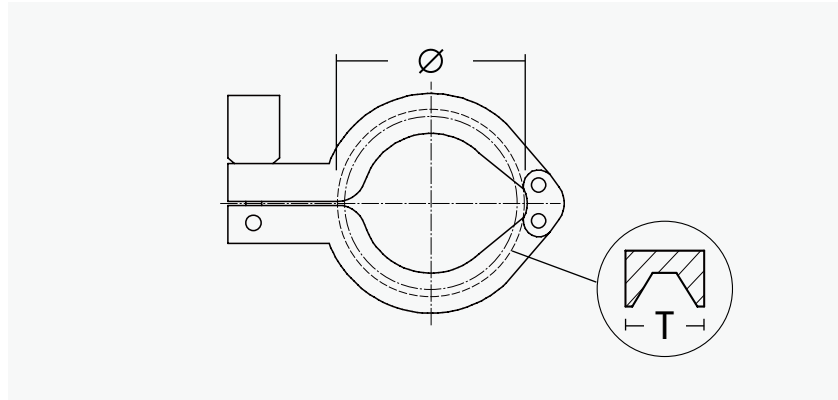
We offer heavy-duty Tri-clamp units made of 304 (1.4301) with anti-loose nuts.



DN (MM)	Ø (INCH)	Ø (MM)	T (MM)	304 (1.4301)
38	1½	51	20.9	211403
50	2	63	21	211404
63	2½	-	-	211405
76	3	90.5	21	211406
89	3½	-	-	211407
102	4	117	20.8	211408
125	5	-	-	211410
154	6	-	-	211412
159	6½	-	-	211413
202	8	-	-	211415
219	8½	-	-	211416

304 Tri-clamp with tightening wing nut operation, 13MHHM

We produce Tri-clamp units for full range of Tri-clover connection, made of 304 (1.4301), nut type optional.



DN (MM)	(INCH)	Ø (MM)	T (MM)	TYPE	304 (1.4301)
10	1/2	27.3	16.7	A B	211341
19	3/4	35	16	A B	211342
38	1½	53	17.3	A B	211343
51	2	63	17.1	A B	211344
63	2½	76	17	A B	211345
76	3	89	17.8	A B	211346
89	3½	104	18	A B	211347
102	4	112.5	17	A B	211348
114	4½	-	-	A B	211349
125	5	-	-	A B	211350
133	5½	-	-	A B	211351
154	6	-	-	A B	211352
159	6½	180	22.5	A B	211353
168	7	-	-	A B	211354
202	8	-	-	A B	211355
219	8½	-	-	A B	211356
254	10	-	-	A B	211357
279	11	-	-	A B	211358
305	12	-	-	A B	211359

DN (MM)	(INCH)	Ø (MM)	T (MM)	TYPE	304 (1.4301)
38	1½	52.5	16.8	A B	211373
51	2	66.8	16.8	A B	211374
63	2½	78.9	16.8	A B	211375
76	3	90	17	A B	211376
89	3½	104.3	17	A B	211377
102	4	121	17.2	A B	211378
133	5½	-	-	A B	211381
154	6	-	-	A B	211382
219	8½	-	-	A B	211386
254	10	-	-	A B	211387

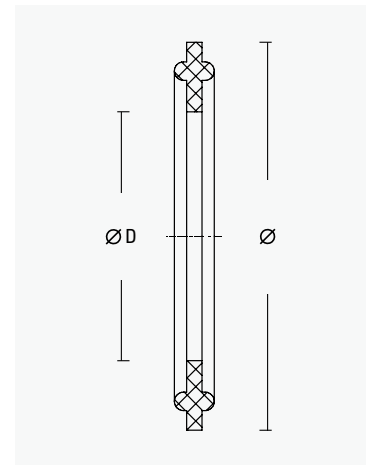
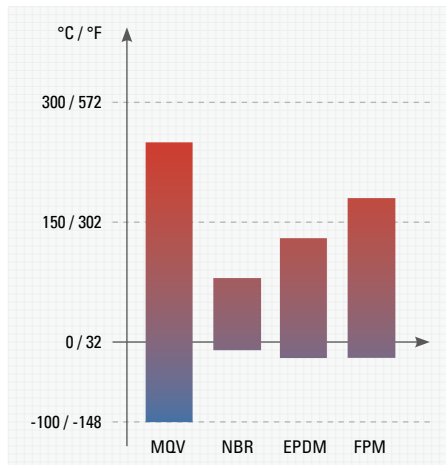
Spare part Tri-clover gasket MQV NBR EPDM FPM



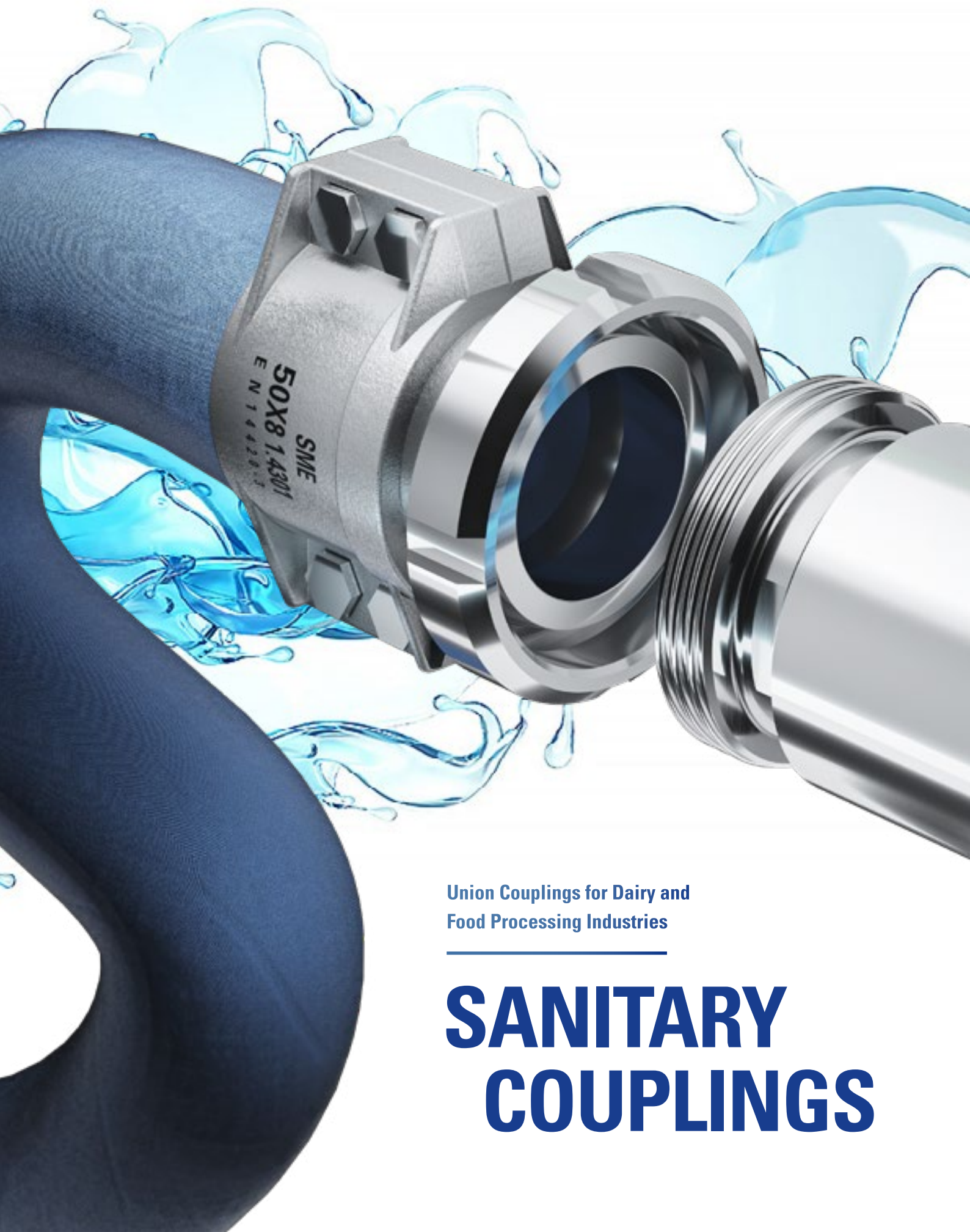
We offer gaskets for Tri-clover connection suitable for food transfer as spare part, not included in standard package of fittings.



GASKET	SHORE A	TEMP (°C)	TEMP (°F)	COMPOUND
MQV	40 ± 5	-100 / 250	-148 / 482	silicone (industrial graded)
NBR	60 ± 5	-10 / 80	14 / 176	acrylonitrile butadiene
EPDM	70 ± 5	-20 / 130	-4 / 266	ethylene propylene
FPM	70 ± 5	-20 / 180	-4 / 356	fluorocarbon



SIZE (INCH)	Ø D (MM)	Ø (MM)	MQV CRYSTAL	NBR BLACK	EPDM WHITE	FPM WHITE
10 (3/8)	-	25.2	210351.2	210351	210351.1	210351.3
10 (3/8)	10.2	34.0	210352.2	210352	210352.1	210352.3
10 (3/8)	10.9	34.0	210352.21	210352.01	210352.11	210352.31
5/8	15.4	34.0	210352.22	210352.02	210352.12	210352.32
3/4	19.5	34.0	210352.23	210352.03	210352.13	210352.33
20 (3/4)	22.0	50.5	210353.2	210353	210353.1	210353.3
25 (1)	28.0	50.5	210353.21	210353.01	210353.11	210353.31
32 (1¼)	42.0	64.0	210354.2	210354	210354.1	210354.3
40 (1½)	48.8	64.0	210354.21	210354.01	210354.11	210354.31
50 (2)	57.0	77.5	210355.2	210355	210355.1	210355.3
65 (2½)	67.0	91.0	210356.2	210356	210356.1	210356.3
75 (3)	72.9	91.0	-	210356.01	-	-
89 (3½)	85.1	106.0	210358.2	210358	210358.1	210358.3
150 (6)	-	183.0	210363.2	210363	210363.1	210363.3



Union Couplings for Dairy and
Food Processing Industries

SANITARY COUPLINGS

SME SANITARY COUPLINGS

MALE COUPLINGS

Swage ferrule with internal serration in combination with male RD food-graded thread fittings, inserted with silicon flat gasket.

All interior surfaces are grinded and highly polished to roughness Ra 0.8-1.6 μm , eliminating the chance of residue after the transfer. Flat gasket sealing surface is substantially polished with the contact surfaces



FEMALE COUPLINGS

Female couplings incorporate a threaded union nut and a female sanitary liner coupling. Surface polished to less than roughness Ra 1.6 μm .



DIN SAFETY CLAMPS

Reuseable bolted clamps assembled in acc. to guideline EN 14420 series is desired for DIN sanitation hose couplings.



316L & 304 Liner coupling by collar and hose tail DIN11851

We produce female part, or the liner coupling of union set, worked from 316L (1.4404) or optional 304 (1.4301) bar stock.



DN (MM)	(INCH)	Ø (MM)	L (MM)	316L (1.4404)	304 (1.4301)
10	3/8	10.2	59	210010.27	210010.25
15	1/2	13.2	60	210011.27	210011.25
20	3/4	19.2	61	210012.27	210012.25
25	1	25.2	64.5	210013.27	210013.25
32	1¼	32.2	67	210014.27	210014.25
40	1½	38	68	210015.27	210015.25
50	2	51	79	210016.27	210016.25
65	2½	63.5	102	210017.27	210017.25
80	3	76.1	120	210018.27	210018.25
100	4	101.6	143	210019.27	210019.25
125	5	129	-	210020.27	210020.25
150	6	150.1	203	210021.27	210021.25

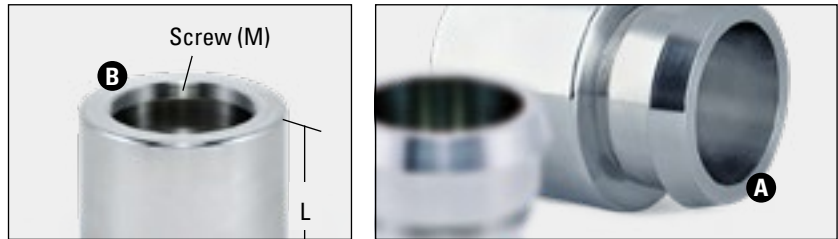


DN (MM)	(INCH)	Ø (MM)	L (MM)	316L (1.4404)	304 (1.4301)
10	3/8	10.2	59	210010.24	210010.23
15	1/2	13.2	60	210011.24	210011.23
20	3/4	19.2	61	210012.24	210012.23
25	1	25.2	64.5	210013.24	210013.23
32	1¼	32.2	67	210014.24	210014.23
40	1½	38.2	68	210015.24	210015.23
50	2	50.2	79	210016.24	210016.23
65	2½	63.2	96	210017.24	210017.23
80	3	75.5	105	210018.24	210018.23
100	4	100.2	140.5	210019.24	210019.23
125	5	129	-	210020.24	210020.23
150	6	150.1	203	210021.24	210021.23

304 Liner coupling screw-on crimping ferrule



We produce a liner coupling for crimping ferrule and additional screw-on threading, made of 304 (1.4301) bar stock.



DN (MM)	Ø (INCH)	M (SCREW)	L (MM)	TYPE	304 (1.4301)
50	2	M57×1.25	88	A B	210016.29
65	2½	M73×1.25	121	A B	210017.29
80	3	M84×1.25	155	A B	210018.29

DN (MM)	Ø (INCH)	M (SCREW)	L (MM)	TYPE	304 (1.4301)
50	2	M57×71.8	60	A B	211019.1
65	2½	M73×90	100	A B	211023.1
80	3	M84×106	106	A B	211026

316L & 304 Welding liner DIN1851 DIN14



We produce female liner for BW welding pipe, made of 316 (1.4404) and 304 (1.4301), done with internal serration.

DN (MM)	Ø (INCH)	Ø (MM)	L (MM)	316L (1.4404)	304 (1.4301)
10	3/8	15	17	210010.21	210010.2
15	1/2	21	17	210011.21	210011.2
20	3/4	25	18	210012.21	210012.2
25	1	31	22	210013.21	210013.2
32	1¼	37	25	210014.21	210014.2
40	1½	43	26	210015.21	210015.2
50	2	55	28	210016.21	210016.2
65	2½	72	32	210017.21	210017.2
80	3	87	37	210018.21	210018.2
100	4	106	44	210019.21	210019.2
125	5	132	34	210020.21	210020.2
150	6	157	37	210021.21	210021.2



316L & 304 Male RD thread hose coupling DIN11851

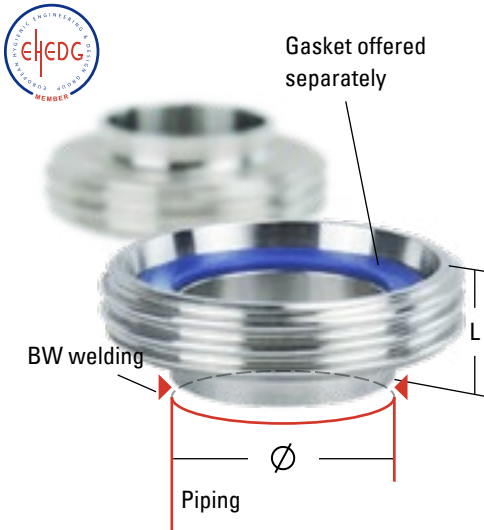
We produce male RD part of a union set, worked from 316L (1.4404) or optional 304 (1.4301) bar stock, gasket not included.



DN (MM)	THR (INCH)	Ø (MM)	L (MM)	TYPE	316L (1.4404)	304 (1.4301)
10	RD28×1/8"	10.2	59	A B	210010.36	210010.35
15	RD34×1/8"	13.2	63	A B	210011.36	210011.35
20	RD44×1/6"	19.2	65	A B	210012.36	210012.35
25	RD52×1/6"	25.2	64.5	A B	210013.36	210013.35
32	RD58×1/6"	32.2	67	A B	210014.36	210014.35
40	RD65×1/6"	38.0	68	A B	210015.36	210015.35
50	RD78×1/6"	51.0	79	A B	210016.36	210016.35
65	RD95×1/6"	63.5	102	A B	210017.36	210017.35
80	RD110×1/4"	76.1	120	A B	210018.36	210018.35
100	RD130×1/4"	101.6	143	A B	210019.36	210019.35
125	RD160×1/4"	-	-	A B	210020.36	210020.35
150	RD190×1/4"	150.1	213	A B	210021.36	210021.35

DN (MM)	THR (INCH)	Ø (MM)	L (MM)	TYPE	316L (1.4404)	304 (1.4301)
10	RD28×1/8"	10.2	59	A B	210010.34	210010.33
15	RD34×1/8"	13.2	63	A B	210011.34	210011.33
20	RD44×1/6"	19.2	65	A B	210012.34	210012.33
25	RD52×1/6"	25.2	64.5	A B	210013.34	210013.33
32	RD58×1/6"	32.2	67	A B	210014.34	210014.33
40	RD65×1/6"	38.2	68	A B	210015.34	210015.33
50	RD78×1/6"	50.2	79	A B	210016.34	210016.33
65	RD95×1/6"	63.2	96	A B	210017.34	210017.33
80	RD110×1/4"	75.2	105	A B	210018.34	210018.33
100	RD130×1/4"	100.2	140.5	A B	210019.34	210019.33
125	RD160×1/4"	-	-	A B	210020.34	210020.33
150	RD190×1/4"	150.1	213	A B	210021.34	210021.33

316L & 304 Welding male part DIN11851 DIN14

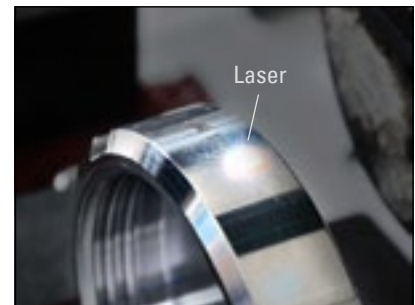


We produce male RD part for BW welding pipe, made of 316 (1.4404) and 304 (1.4301), done with internal serration.

DN (MM)	THRD (INCH)	∅ (MM)	L (MM)	316L (1.4404)	304 (1.4301)
10	RD28×1/8"	15	21	210010.31	210010.3
15	RD34×1/8"	21	21	210011.31	210011.3
20	RD44×1/6"	25	24	210012.31	210012.3
25	RD52×1/6"	31	29	210013.31	210013.3
32	RD58×1/6"	37	32	210014.31	210014.3
40	RD65×1/6"	43	33	210015.31	210015.3
50	RD78×1/6"	55	35	210016.31	210016.3
65	RD95×1/6"	72	40	210017.31	210017.3
80	RD110×1/4"	87	45	210018.31	210018.3
100	RD130×1/4"	106	54	210019.31	210019.3
125	RD160×1/4"	132	46	210020.31	210020.3
150	RD190×1/4"	157	50	210021.31	210021.3

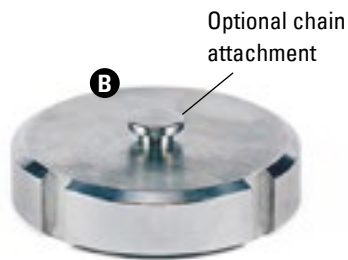
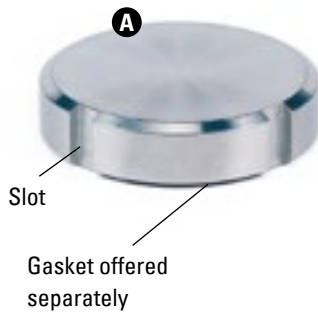
316L & 304 RD slotted nut DIN11851 DIN13

We produce RD threaded nut with slots, made of 316 (1.4404) and 304 (1.4301).



DN (MM)	THRD (INCH)	SLOT (NUM)	316L (1.4404)	304 (1.4301)
10	RD28×1/8"	4	210010.11	210010.1
15	RD34×1/8"	4	210011.11	210011.1
20	RD44×1/6"	4	210012.11	210012.1
25	RD52×1/6"	4	210013.11	210013.1
32	RD58×1/6"	4	210014.11	210014.1
40	RD65×1/6"	4	210015.11	210015.1
50	RD78×1/6"	4	210016.11	210016.1
65	RD95×1/6"	6	210017.11	210017.1
80	RD110×1/4"	6	210018.11	210018.1
100	RD130×1/4"	6	210019.11	210019.1
125	RD160×1/4"	6	210020.11	210020.1
150	RD190×1/4"	6	210021.11	210021.1

316L & 304 Slotted blank nut RD thread DIN11851 DIN13



We offer blank nut or dust cap with RD thread from sanitary-graded materials.

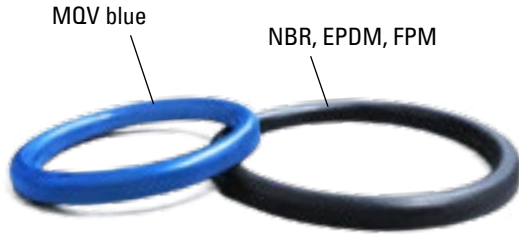
DN (MM)	THRD (INCH)	SLOT (NUM)	TYPE	304 (1.4301)
10	RD28×1/8"	4	A B C	210050
15	RD34×1/8"	4	A B C	210051
20	RD44×1/6"	4	A B C	210052
25	RD52×1/6"	4	A B C	210053
32	RD58×1/6"	4	A B C	210054
40	RD65×1/6"	4	A B C	210055
50	RD78×1/6"	4	A B C	210056
65	RD95×1/6"	6	A B C	210057
80	RD110×1/4"	6	A B C	210058
100	RD130×1/4"	6	A B C	210059

DN (MM)	THRD (INCH)	SLOT (NUM)	TYPE	316L (1.4404)	304 (1.4301)
10	RD28×1/8"	4	A B C	210030.1	210030
15	RD34×1/8"	4	A B C	210031.1	210031
20	RD44×1/6"	4	A B C	210032.1	210032
25	RD52×1/6"	4	A B C	210033.1	210033
32	RD58×1/6"	4	A B C	210034.1	210034
40	RD65×1/6"	4	A B C	210035.1	210035
50	RD78×1/6"	4	A B C	210036.1	210036
65	RD95×1/6"	6	A B C	210037.1	210037
80	RD110×1/4"	6	A B C	210038.1	210038
100	RD130×1/4"	6	A B C	210039.1	210039
125	RD160×1/4"	6	A B C	-	210040
150	RD190×1/4"	6	A B C	-	210041

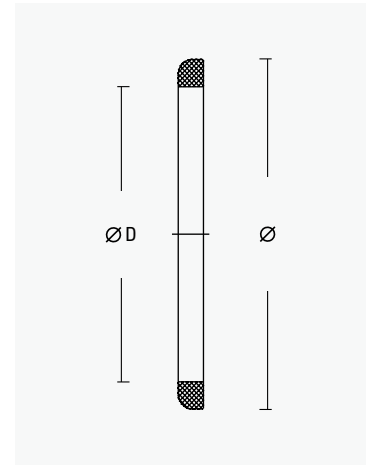
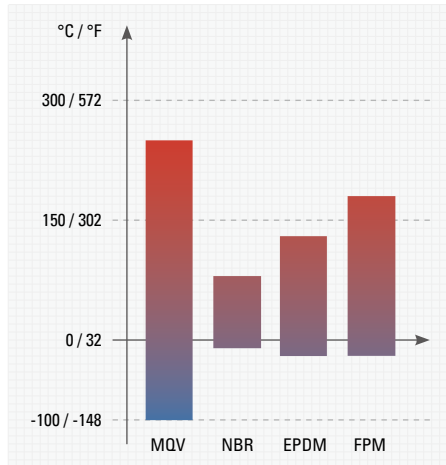
DN (MM)	THRD (INCH)	L (MM)	TYPE	316L (1.4404)	304 (1.4301)
15	RD34×1/8"	21	A B C	210071.1	210071
20	RD44×1/6"	24	A B C	210072.1	210072
25	RD52×1/6"	24	A B C	210073.1	210073
32	RD58×1/6"	24	A B C	210074.1	210074
40	RD65×1/6"	24	A B C	210075.1	210075
50	RD78×1/6"	24	A B C	210076.1	210076
65	RD95×1/6"	28	A B C	210077.1	210077
80	RD110×1/4"	30	A B C	210079.1	210079
100	RD130×1/4"	30	A B C	210080.1	210080
125	RD160×1/4"	36	A B C	210081.1	210081
150	RD190×1/4"	40	A B C	210082.1	210082

Spare part DIN11851 coupling gasket MQV NBR EPDM FPM

We offer gaskets for DIN11851 union connection suitable for food transfer as spare part, not included in standard package of fittings.

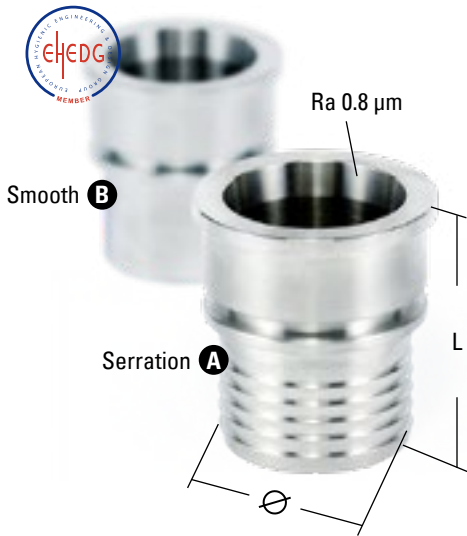


GASKET	SHORE A	TEMP (°C)	TEMP (°F)	COMPOUND
MQV	40 ± 5	-100 / 250	-148 / 482	silicone (industrial graded)
NBR	60 ± 5	-10 / 80	14 / 176	acrylonitrile butadiene
EPDM	70 ± 5	-20 / 130	-4 / 266	ethylene propylene
FPM	70 ± 5	-20 / 180	-4 / 356	fluorocarbon



SIZE (INCH)	Ø D (MM)	Ø (MM)	MQV TRSPRNT	NBR BLACK	EPDM BLACK	FPM BLACK
10 (3/8)	12	20	210010.4	210010.41	210010.44	210010.45
15 (1/2)	18	26	210011.4	210011.41	210011.44	210011.45
20 (3/4)	23	33	210012.4	210012.41	210012.44	210012.45
25 (1)	30	40	210013.4	210013.41	210013.44	210013.45
32 (1¼)	36	46	210014.4	210014.41	210014.44	210014.45
40 (1½)	42	52	210015.4	210015.41	210015.44	210015.45
50 (2)	54	64	210016.4	210016.41	210016.44	210016.45
65 (2½)	71	81	210017.4	210017.41	210017.44	210017.45
80 (3)	85	95	210018.4	210018.41	210018.44	210018.45
100 (4)	104	114	210019.4	210019.41	210019.44	210019.45
125 (5)	130	142	210020.4	210020.41	210020.44	210020.45
150 (6)	155	167	210021.4	210021.41	210021.44	210021.45

316L Liner coupling by collar and hose tail SMS1145

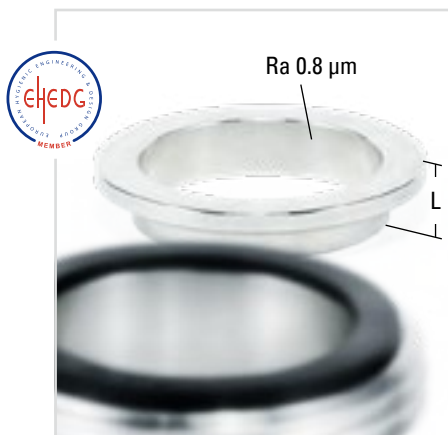


We produce female part, or the liner coupling of union set, worked from 316L (1.4404).

DN (MM)	(INCH)	Ø (MM)	L (MM)	TYPE	316L (1.4404)
25	1	19.4	61.5	A B	202011.27
25	1	25.0	61.0	A B	202011.23
27	1	27.0	51.7	A B	202012.23
32	1¼	32.2	65.0	A B	202013.23
38	1½	38.0	67.0	A B	202014.23
50	2	38.0	66.0	A B	202015.27
50	2	51.0	75.0	A B	202015.23
65	2½	51.0	80.0	A B	202016.27
65	2½	63.5	98.7	A B	202016.23
76	3	63.5	98.7	A B	202018.27
76	3	70.0	99.5	A B	202018.28
76	3	76.1	112.3	A B	202018.23
104	4	101.6	127.0	A B	202020.23
100	4	101.6	127.0	A B	202021.23

DN (MM)	(INCH)	Ø (MM)	L (MM)	TYPE	316L (1.4404)
19	¾	19.4	-	A B	202010.24
25	1	25.0	61.0	A B	202011.24
32	1¼	32.2	65.0	A B	202013.24
38	1½	38.0	67.0	A B	202014.24
50	2	51.0	75.0	A B	202015.24
65	2½	63.5	98.7	A B	202016.24
65	2½	65.0	98.7	A B	202017.24
76	3	76.1	112.3	A B	202018.24
80	3	80.0	112.3	A B	202019.24
104	4	100.3	127.0	A B	202020.24
100	4	101.6	127.0	A B	202021.24

316L Welding liner SMS1145

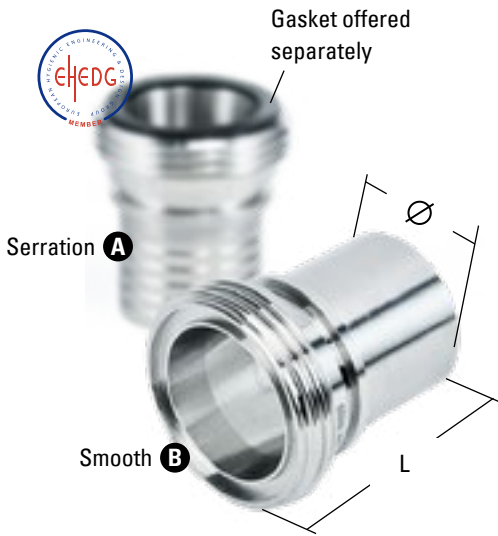


We produce SMS female liner for BW welding pipe made of 316 (1.4404).

DN (MM)	(INCH)	Ø (MM)	L (MM)	316L (1.4404)
25	1	25.0	15	202011.21
32	1¼	32.0	15	202013.21
38	1½	38.0	20	202014.21
50	2	51.0	20	202015.21
65	2½	63.5	24	202016.21
76	3	76.1	24	202018.21
100	4	101.6	30	202021.21
104	4	104.0	30	202020.21

SMS 1145
SVENSK STANDARD SANITATION

316L Male RD thread hose coupling SMS1145



We produce SMS male RD part of a union set, worked from 316L (1.4404), gasket not included.

DN (MM)	THRD (INCH)	Ø (MM)	L (MM)	TYPE	316L (1.4404)
25	RD40×1/6"	25.0	61.5	A B	202011.34
32	RD48×1/6"	32.2	64.5	A B	202013.34
38	RD60×1/6"	38.0	65.0	A B	202014.34
50	RD70×1/6"	51.0	74.0	A B	202015.34
65	RD85×1/6"	63.5	96.8	A B	202016.34
65	RD85×1/6"	65.0	96.8	A B	202017.34
76	RD98×1/6"	76.1	110.3	A B	202018.34
80	-	80.0	110.3	A B	202019.34
100	RD132×1/6"	101.6	126.5	A B	202020.34

DN (MM)	THRD (INCH)	Ø (MM)	L (MM)	TYPE	316L (1.4404)
25	RD40×1/6"	25.0	61.5	A B	202011.33
32	RD48×1/6"	32.2	64.5	A B	202013.33
38	RD60×1/6"	38.0	65.0	A B	202014.33
50	RD70×1/6"	51.0	74.0	A B	202015.33
65	RD85×1/6"	63.5	96.8	A B	202016.33
65	RD85×1/6"	65.0	96.8	A B	202017.33
76	RD98×1/6"	76.1	110.3	A B	202018.33
80	-	80.0	110.3	A B	202019.33
100	RD132×1/6"	101.6	126.5	A B	202020.33

316L Welding male part SMS1145



We produce SMS male RD part for BW welding pipe made of 316 (1.4404).

DN (MM)	THRD (INCH)	Ø (MM)	L (MM)	316L (1.4404)
25	RD40×1/6"	25.0	19	202011.31
32	RD48×1/6"	32.0	19	202013.31
38	RD60×1/6"	38.0	23	202014.31
50	RD70×1/6"	51.0	23	202015.31
65	RD85×1/6"	63.5	27	202016.31
76	RD98×1/6"	76.1	27	202018.31
100	RD125×1/6"	101.6	30	202021.31
104	RD132×1/6"	104.0	30	202020.31

304 RD slotted nut SMS1145

We produce SMS RD threaded nut with slots made of 304 (1.4301).



DN (MM)	THRD (INCH)	SLOT (NUM)	304 (1.4301)
25	RD40×1/6"	6	202011.1
32	RD48×1/6"	6	202013.1
38	RD60×1/6"	6	202014.1
50	RD70×1/6"	6	202015.1
65	RD85×1/6"	6	202016.1
76	RD98×1/6"	6	202018.1
100	RD125×1/6"	6	202021.1
104	RD132×1/6"	6	202020.1

MACON Sanitary Union Hose Fittings



316L & 304 Liner coupling by serrated hose tail MACON

We design MACON compliant couplings and slotted nut made of 316L (1.4404) or 304 (1.4301).



DN (MM)	Ø (INCH)	Ø (MM)	L (MM)	TYPE	316L (1.4404)	304 (1.4301)
40	1½	39.0	71.0	A B C	214104.25	214104.23
50	2	51.0	74.5	A B C	214105.25	214105.23
65	2½	63.2	64.5	A B C	214106.25	214106.23
70	3	70.0	95.0	A B C	214107.25	214107.23

DN (MM)	THRD (INCH)	Ø (MM)	L (MM)	TYPE	316L (1.4404)	304 (1.4301)
40	RD65×1/6"	39.0	71.0	A B C	214104.25	214104.23
50	RD78×1/6"	51.0	74.5	A B C	214105.25	214105.23
65	RD95×1/6"	63.2	64.5	A B C	214106.25	214106.23
70	RD110×1/4"	70.0	95.0	A B C	214107.25	214107.23

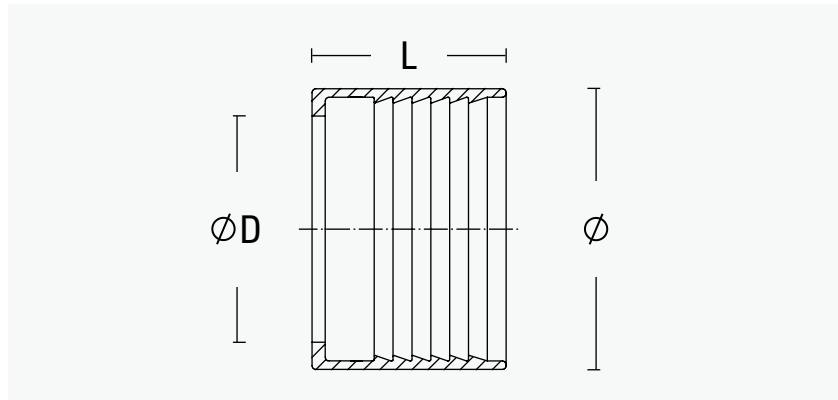
DN (MM)	THRD (INCH)	SLOT (NUM)	TYPE	304 (1.4301)
40	M55×P3.0	4	A B C	214104.1
50	M67×P3.0	4	A B C	214105.1
65	M79×P3.5	4	A B C	214106.1
70	M90×P3.5	4	A B C	214107.1



304 Crimping ferrule with internal serration



We produce serrated ferrule clamping for heavy-duty and sanitary application, made from 304 (1.4301), optional other materials.



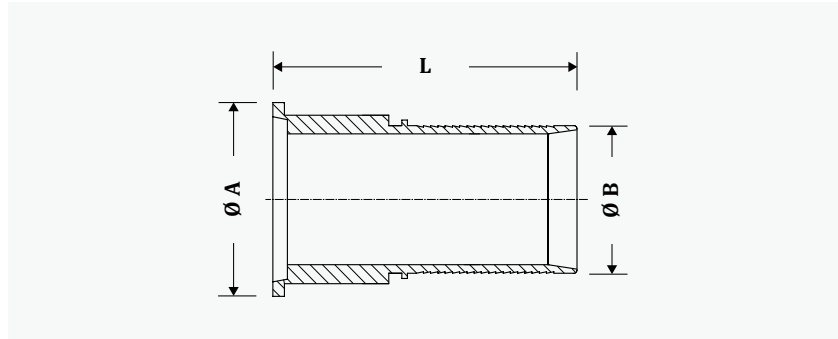
DN (MM)	Ø (INCH)	Ø (MM)	Ø D (MM)	L (MM)	304 (1.4301)
13×24.5	1/2	24.5	19.4	34	211011
15×27.5	1/2	27.5	21.9	38	211012
19×33	3/4	33	25.3	42.3	211013.1
19×32	3/4	32	26.5	41	211013
25×40	1	40	31.5	32.7	211014
25×39	1	39	32.5	41	211015
25×42	1	42	31.5	32.7	211015.2
25×39	1	39	32.5	41	211082
25×41	1	41	32.5	41	211082.1
25×41	1	41	32.5	46	211082.2
25×39	1	39	32.5	46	211082.8
25×39	1	39	32.5	44.5	211082.9
32×47	1¼	47	40	41	211083
32×53	1¼	53	40	41	211083.1
32×53	1¼	53	40	46	211083.2
32×47	1¼	47	40	46	211083.8
32×47	1¼	47	40	45	211083.9
38×54.5	1½	54.5	47	41.5	211016
38×52.5	1½	52.5	45.5	41	211017
40×52.5	1½	52.5	45.5	41	211084
40×55	1½	55	45.5	41	211084.1
40×55	1½	55	45.5	46	211084.2

DN (MM)	(INCH)	Ø (MM)	Ø D (MM)	L (MM)	304 (1.4301)
40×52.5	1½	52.5	45.5	46	211084.8
40×52.5	1½	52.5	45.5	45	211084.9
50×68	2	68	59.3	41.6	211018
50×67	2	67	60	55	211019
50×67	2	67	60	51.5	211019.2
50×67.5	2	67.5	59.7	51	211019.3
50×73	2	73	59.3	51.5	211020
50×67	2	67	60	55	211085
50×71	2	71	60	55	211085.1
50×67	2	67	60	55	211085.5
50×67	2	67	60	54	211085.9
65×79	2½	79	72	57.7	211021
65×83.5	2½	83.5	72	57.7	211022
65×82	2½	82	73.5	65	211023
65×79	2½	79	73.5	65	211023.2
65×91	2½	91	72	57.7	211024
65×82	2½	82	73.5	65	211086
65×82	2½	82	73.5	68	211086.2
65×82	2½	82	73.5	74	211086.8
65×82	2½	80	73.5	66.5	211086.9
65×93.5	2½	93.5	72.5	61	211086.91
65×83.5	2½	83.5	73.5	66.5	211086.92
70×85	2½	85	74	62	211031
70×87	2½	87	80	63	211031.1
75×96	3	96	84.5	58.2	211025
75×93.6	3	93.6	84.5	83	211026
75×105	3	105	84.5	58.2	211028
75×110	3	110	84.5	58.2	211029
75×93.6	3	93.6	85.5	83	211087
75×96	3	96	85.5	83	211087.1
75×93.6	3	93.6	85.5	87	211087.2
75×96	3	96	85.5	87	211087.3
75×93.6	3	93.6	85.5	72	211087.8
75×93.6	3	93.6	85.5	70.5	211087.9
75×106.5	3	106.5	85	66	211087.91
75×94.5	3	94.5	85.5	70.5	211087.92
100×120	4	120	113	101	211029
100×120	4	120	113	101	211089
100×123	4	123	113	101	211089.1
100×123	4	123	113	103	211089.2
100×120	4	120	113	103	211089.8
100×120	4	120	113	104	211089.9
100×135	4	135	112	70.5	211089.91
100×123	4	123	113	104	211089.92

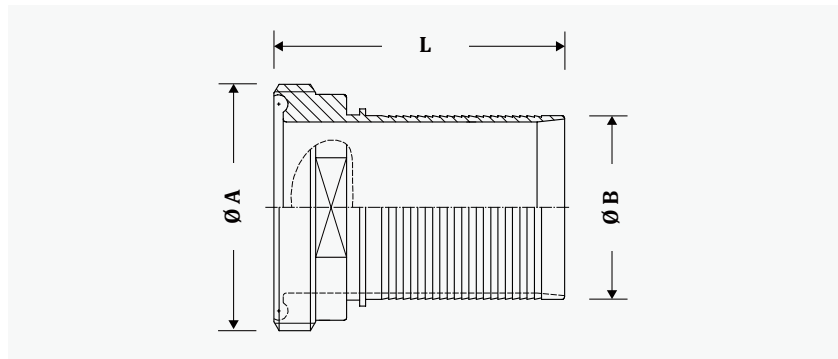
304 Liner coupling by serrated hose tail, RJT



We offer RJT compliant couplings and hexagonal nut made of 304 (1.4301).



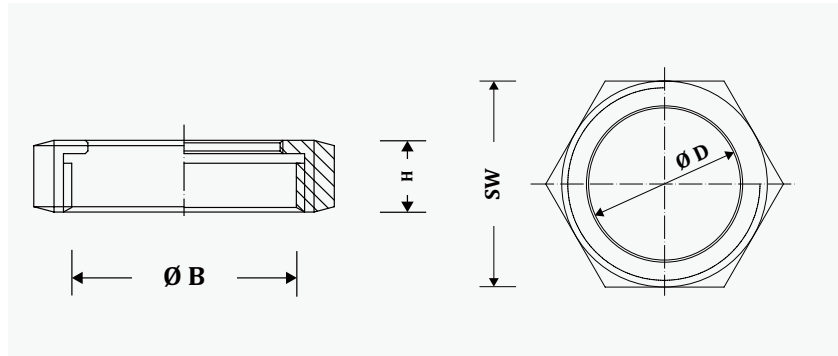
DN (MM)	(INCH)	ØA (MM)	ØB (MM)	L (MM)	304 (1.4301)
25	1	39.4	25.5	60	203113.27
38	1¼	54.0	38.2	75	203115.27
50	2	66.7	50.8	85	203116.27
65	2½	79.4	63.5	120	203117.27
80	3	88.5	76.0	105.5	203118.27
100	4	117.5	102.5	125.0	203119.27



DN (MM)	(INCH)	ØA (MM)	ØB (MM)	L (MM)	304 (1.4301)
25	1	45.72	25.5	62	203113.36
38	1¼	58.42	38.2	77	203115.36
50	2	72.72	51.0	90	203116.36
65	2½	85.42	63.5	100	203117.36
80	3	98.12	76.5	111	203118.36
100	4	123.52	102.5	139	203119.36

304 Hexagon nut RJT

We offer thread nut made of 304 (1.4301) for RJT compliant couplings.



DN (MM)	(INCH)	ØB (MM)	H (MM)	ØD (MM)	SW (MM)	304 (1.4301)
25	1	42.27	22.2	33.3	50.8	203113.2
38	1¼	54.97	22.2	46.0	65.0	203115.2
50	2	67.92	22.2	58.7	79.4	203116.2
65	2½	80.62	22.2	71.4	92.1	203117.2
80	3	93.32	22.2	84.1	104.8	203118.2
100	4	118.72	22.2	109.5	130.2	203119.2